

GIGI SCARIA - LIFE, DEATH, AND MISCELLANEOUS



Gigi Scaria
Waq waq tree, 2022
Etching on Somerset paper
36h x 20w in
1 of 20



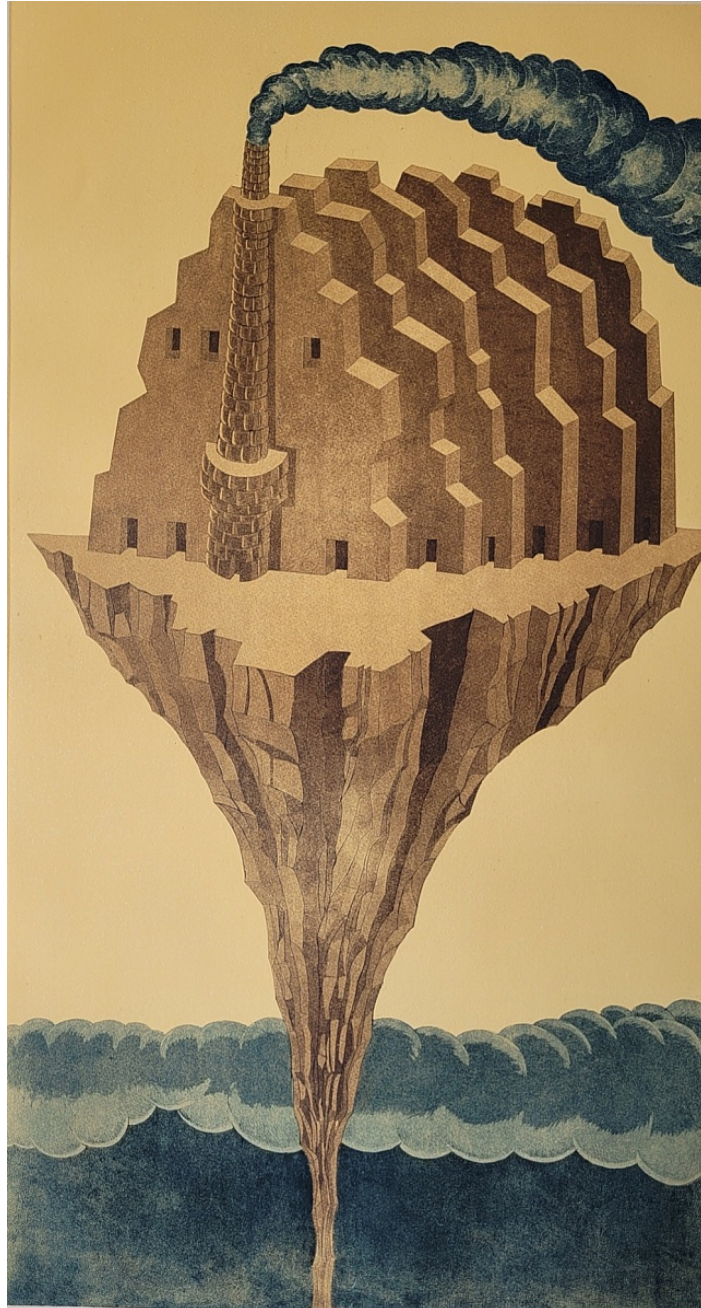
Gigi Scaria
Scroll, 2022
Etching on Somerset paper
36h x 20w in
1 of 20



Gigi Scaria
Shadow line, 2022
Etching on Somerset paper
36h x 20w in
1 of 20



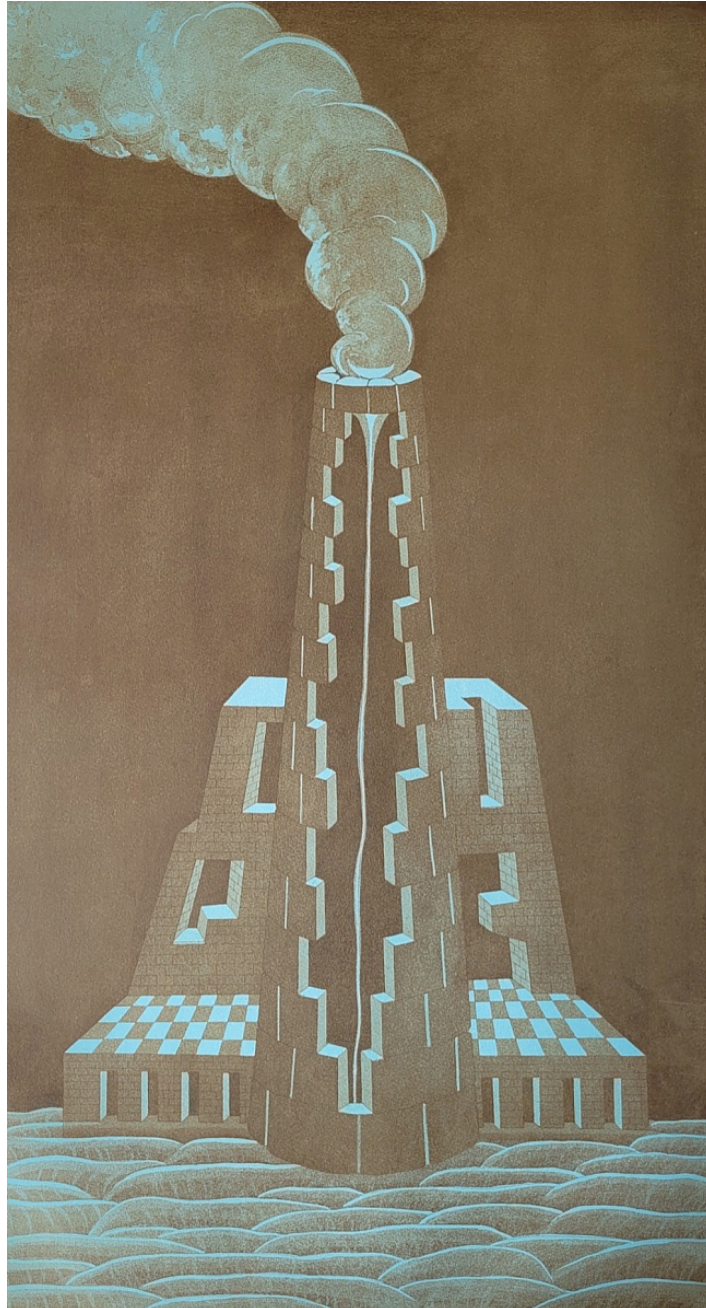
Gigi Scaria
Veil, 2022
Etching on Somerset paper
36h x 20w in
1 of 20



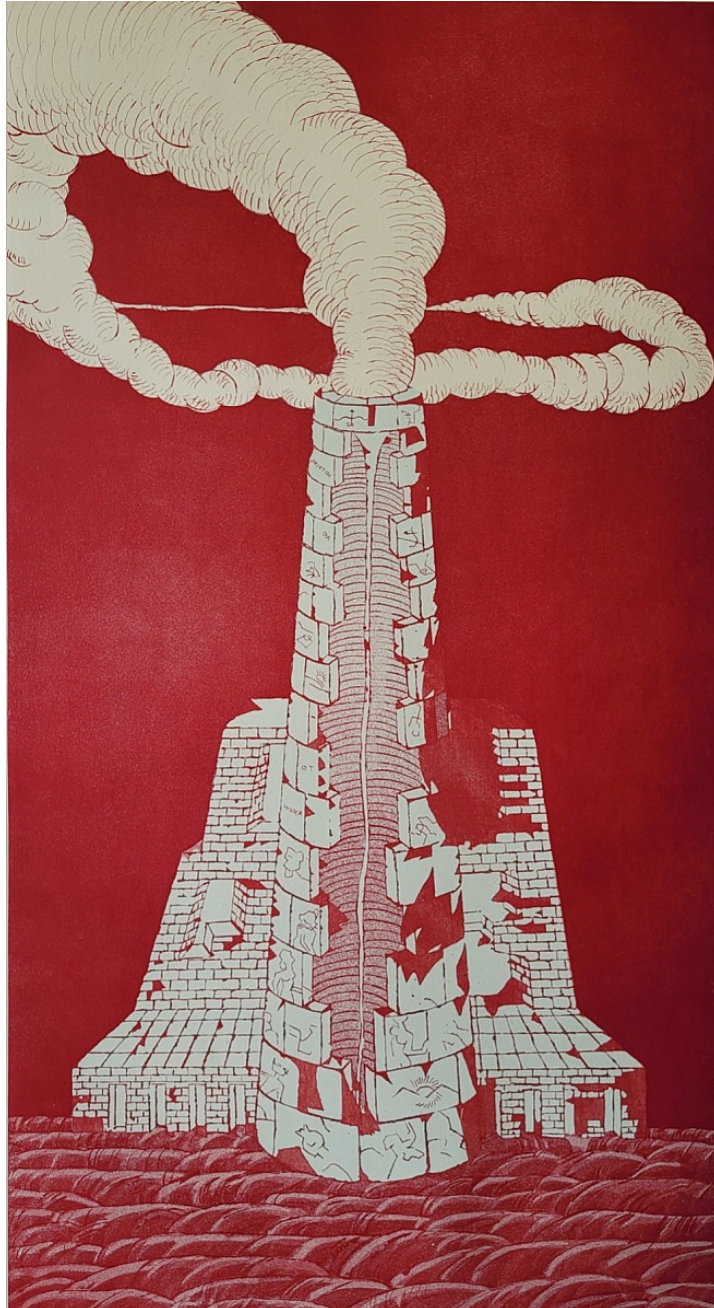
Gigi Scaria
No stone unturned, 2022
Etching on Somerset paper
36h x 20w in
1 of 20



Gigi Scaria
Maps and roots, 2022
Etching on Somerset paper
38h x 20w in
1 of 20



Gigi Scaria
Hydrosphere I, 2022
Etching on Somerset paper
36h x 20w in
1/20



Gigi Scaria
Hydrosphere II, 2022
Etching on Somerset paper
36h x 20w in
1/20



Gigi Scaria
Breath I, 2022
Inkjet print on archival paper
36h x 48w in
1/3



Gigi Scaria
Breath II, 2022
Inkjet print on archival paper
36h x 48w in
1/3



Gigi Scaria
Guard, 2022
Inkjet print on archival paper
36h x 48w in
1/3



Gigi Scaria
Suspended, 2022
Acrylic on canvas
60h x 48w in

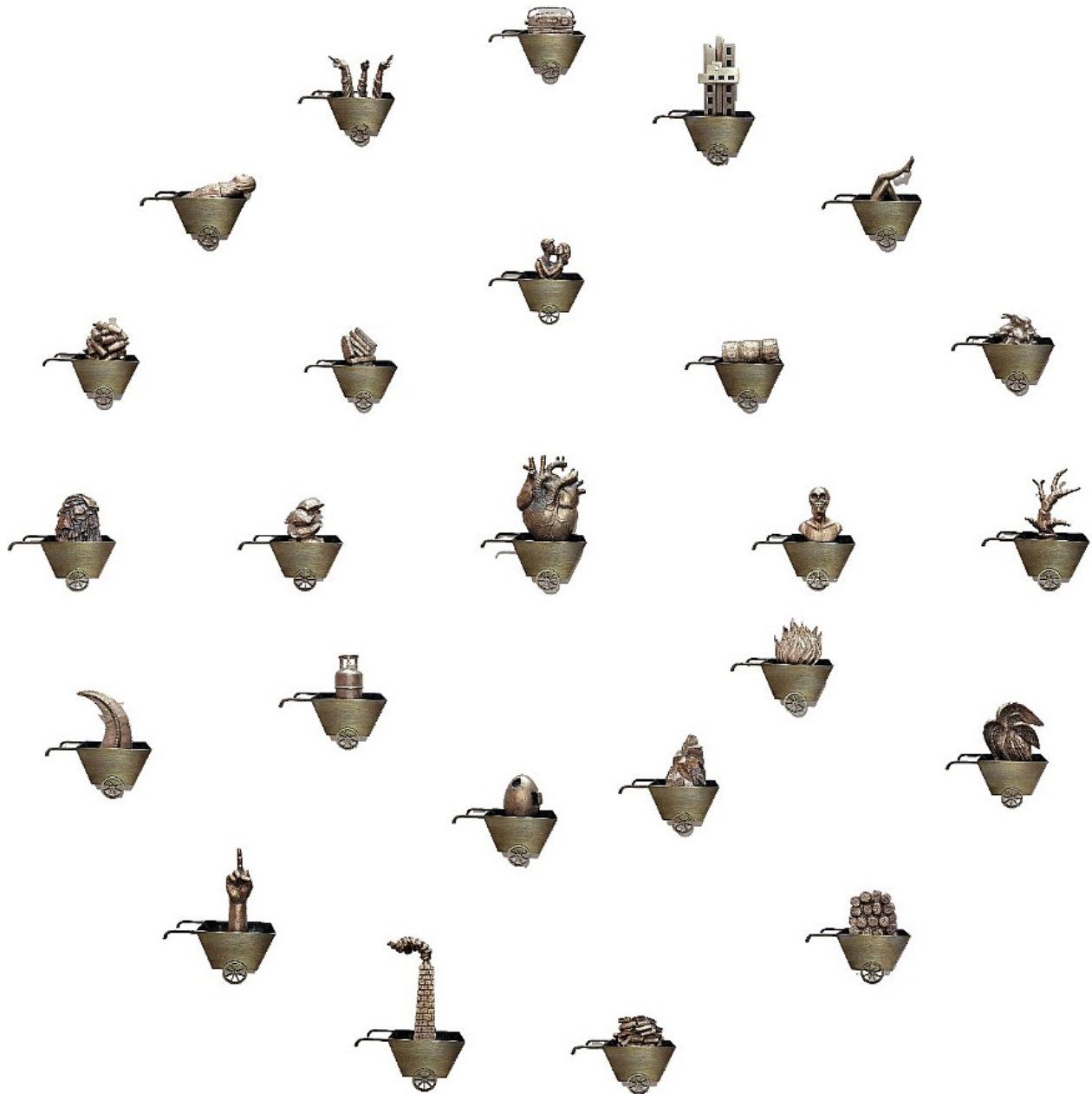


Gigi Scaria
Sprout, 2022
Acrylic on canvas
60h x 48w in



Gigi Scaria
Lineage, 2022
Brass
13h x 65.50w x 5.50d in
Edition 1 of 3

aicon CONTEMPORARY



Gigi Scaria

Life, death and miscellaneous, 2022

Bronze

25 pieces, each approximately 8h x 6w x 4d in

Edition 1 of 3



Gigi Scaria
Core, 2017
Watercolor on paper
40.50h x 28.50w in



Gigi Scaria
Detached, 2017
Watercolor on paper
40.50h x 28.50w in



Gigi Scaria
Meteor, 2017
Watercolor on paper
40.50h x 28.50w in